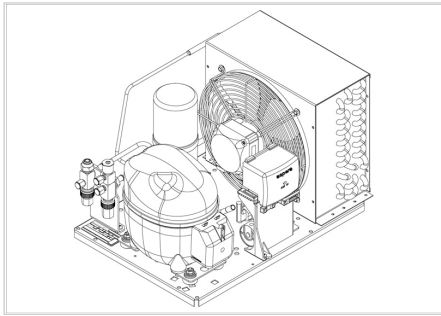



MODEL


**UNEK2168GK****embraco**


APPROVALS

CE


 **ENGINEERING CODE**  
559FA8204AA

 **APPROVED REFRIGERANT**  
R452A

 **POWER SUPPLY**  
220 - 240V 50Hz ~

 **STANDARD CONDITIONS**  
EN13215\_RG20

 **APPLICATION**  
LBP

 **COOLING CAPACITY**  
359 W

 **EFFICIENCY**  
0.73 W/W

DATA

## General Data

Weight	23.8 Kg
Receiver	1.1 L
Height	296 mm
Length	499 mm
Width	340 mm
Power Supply	220 - 240 V 50 Hz

## Electrical Data

Motor Type	CSR
Locked Rotor Amperage (LRA)	18.5 A
Max Current	4.17 A

## Spare Parts

Valve Suction	FLARE 3/8"	2110059
Valve Discharge	FLARE 1/4"	2110085
Condenser	4R11T	2451217
Compressor	NEK2168GK	959HA51..AM
Electrical Kit	ELKOM NEK2168GK	959HA5190A
Fan Kit	16W 254/28°/5B	1996609

## Noise Data

Sound Power Level	64.2 dB (A)	-	-
Sound Pressure Level	at 1 m	at 5 m	at 10 m
	56.19551132 dB (A)	42.21611123 dB (A)	36.19551132 dB (A)

## Fan Motor

Number	1
Shaft Power	16 W
Air Flow	460 m <sup>3</sup> /h
Blade diameter	254 mm

### PERFORMANCE

## Rated Points

Ambient Temperature	Cooling Capacity	Power Consumption	Current	Efficiency
32.00°C	359 W	491 W	4.12 A	0.73 W/W

Test Condition: EN13215\_RG20, Return Gas 20 °C, Subcooling 3K , Evaporation -35.00°C, Condensing 0 °C, Ambient 32.00°C

## Performance Curve Data

Ambient Temperature 25°C

Evaporating Temperature °C	Cooling Capacity W	Power Consumption W	Current A	Efficiency W/W
-40	302	448	3.95	0.68
-35	402	509	4.1	0.79
-30	532	571	4.25	0.93
-25	692	638	4.44	1.09
-20	880	713	4.67	1.23
-15	1094	800	4.98	1.37
-10	1332	903	5.37	1.48

Test Condition: EN13215\_RG20, LBP

### Ambient Temperature 32°C

Evaporating Temperature °C	Cooling Capacity W	Power Consumption W	Current A	Efficiency W/W
-40	271	433	4.02	0.63
-35	359	491	4.12	0.73
-30	476	552	4.23	0.86
-25	620	618	4.39	1
-20	790	695	4.61	1.14
-15	983	784	4.9	1.25
-10	1200	891	5.3	1.35

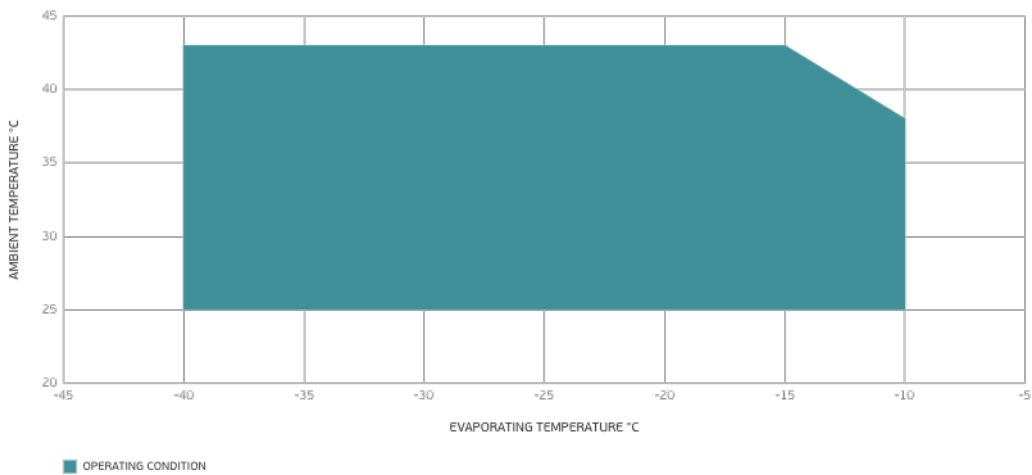
Test Condition: EN13215\_RG20, LBP

### Ambient Temperature 43°C

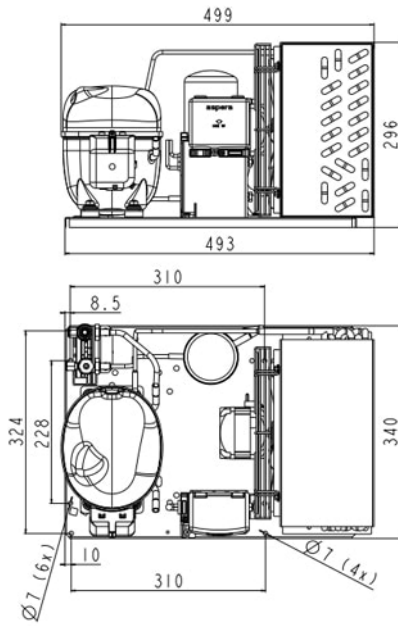
Evaporating Temperature °C	Cooling Capacity W	Power Consumption W	Current A	Efficiency W/W
-40	227	482	4.29	0.47
-35	299	545	4.41	0.55
-30	396	612	4.55	0.65
-25	516	688	4.76	0.75
-20	659	775	5.05	0.85
-15	823	878	5.44	0.94
-10	1006	999	5.94	1.01

Test Condition: EN13215\_RG20, LBP

### Operating Envelope



## External Dimensions



## Wiring Diagram

